



A Smart Manufacturing / Industry 4.0 plant with DSIR approved R&D.



ABOUT US

Gilard Philosophy

Gilard's organisational structure & working stems from its philosophy which is perfectly summed by our founder's words, "Lesser the number of uncertainties, Greater the chances of Success."

In keeping with this belief, Gilard has a wide organisational base under one roof, which includes : Design & Development - Tool Room - Moulding Shop - Press Shop - Automats Shops - Electroplating - Assemblies - Quality Assurance & Marketing for better control on Quality, Cost & Delivery.



"I have always laid the utmost importance on the two constant beliefs in my life - Honest Dealings in Business and the higher priority for me than a transitory profit. That's how Gilard has been doing its business for the past six decades."

H.S. Sethi
H.S. Sethi
(Chairman)

Company Vision

To be the first choice of our customer.

Company Mission

To be a supplier to the Automobile, Electronic and Electrical Industry and achieve perfection in whatever we do.

Quality Policy

Our vision to be the first choice of our customer drives us to improve the way we think, change and act on a continuous basis. We shall measure our performance by our quality, delivery and the skills of our people. We shall maximise our effectiveness by continuously improving our products, processes and services based on customer inputs and our internal metrics.



"Gilard is a One Stop Shop for customers looking for highly complex & customised products." 

- 1961 • Started in Kota (Rajasthan), as a partnership concern, manufacturing Valve Sockets for radios.
- 1970 • Started Manufacturing Electronic Components and renamed as Gilard Electronics.
- 1975 • Registered as Gilard Electronics Pvt. Ltd.
- 1985 • Shifted plant from Kota (Rajasthan) to Mohali (Punjab).
- 1995 • Certified For ISO 9001.
- 2000 • Certified for IATF 16949.
- 2004 • Certified for ISO 14001.
- 2006 • Certified for ISO 45001.
- 2011 • Formation of Gilard's CSR Team EHSAS focusing on Corporate Social Responsibility.
- 2015 • Gilard Application Programmers LLP (sister concern of Gilard Electronics Pvt. Ltd.) is registered as a Company.
- 2017 • Won ACMA's Gold Award for 'Excellence in Digitisation' for implementing Industry 4.0.
- 2020 • Certified as a Great Place To Work™ by the Great Place To Work™ Institute.
- 2021 • Gilard celebrates its Diamond Anniversary with 60 Years of Operations.
- 2024 • Inauguration of Gilard's R&D Department which is recognised by Department of Scientific & Industrial Research (DSIR), Govt. of India.

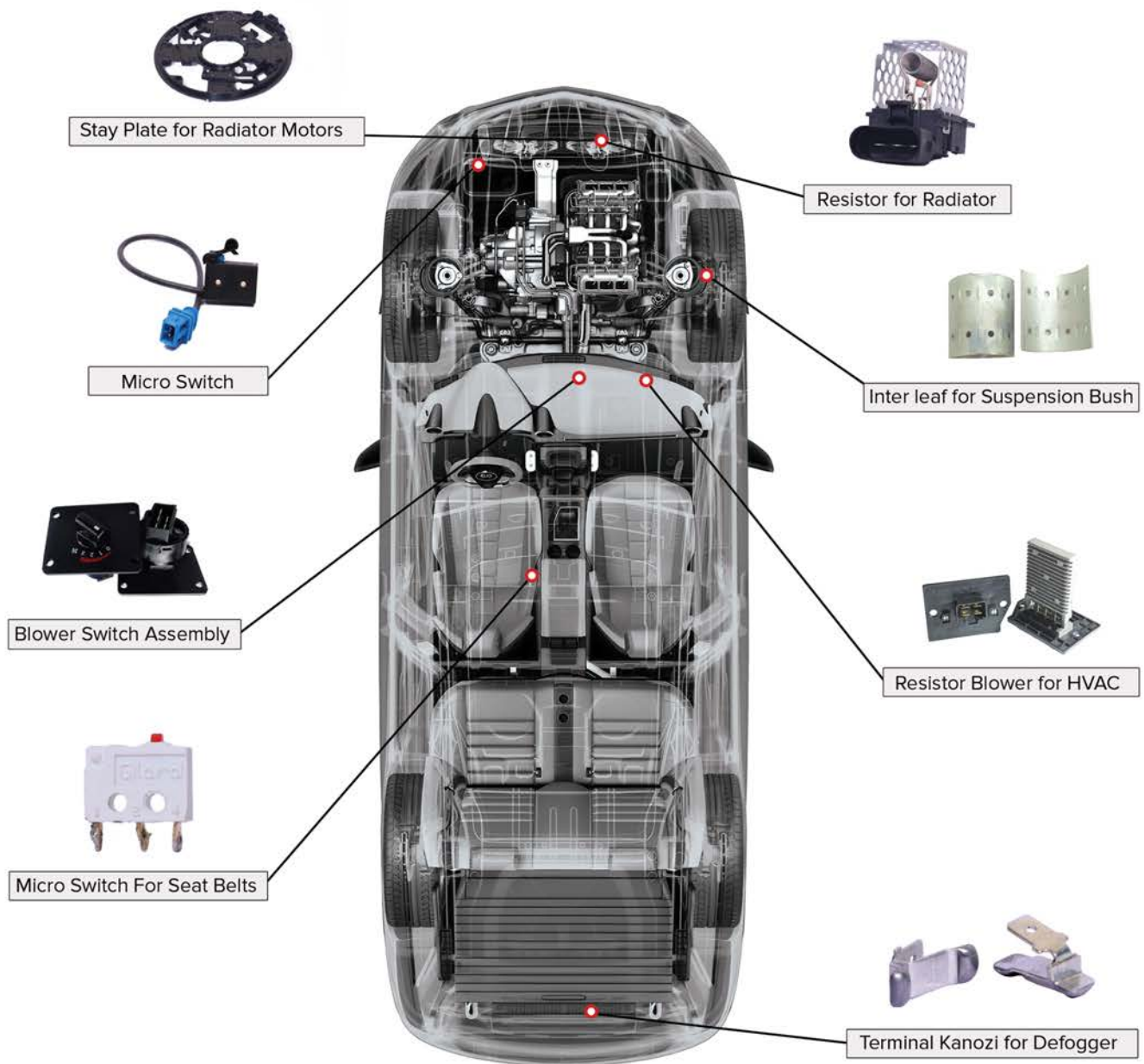
Gilard is an Award Winning Company

- ✓ Certified as a Great Place To Work.
- ✓ Awarded ACMA's Gold Award for 'Excellence in Digitisation'.
- ✓ Only Company in Punjab to receive QCI - ZED Certificate with Diamond Rating.
- ✓ Highlighted in a study by UNIDO as an Industry 4.0 Smart Manufacturing Plant.
- ✓ Won QCI-D.L.Shah Gold Quality Award for Productivity Improvement in Moulding Shop.
- ✓ Gilard gets Punjab State MSME Award.
- ✓ Gilard wins an Award at ACMA's Northern region 5S Competition 2019.



Research and Development

Gilard has a government recognised inhouse R&D centre which houses a team of experienced design engineers in our New Product Development Team who create drawings and models for child parts, finished products and tools for mass production. Our R&D team works as per the 5-D model of New Development which is a Gilard patented method of development cycle which includes Function Study, Design and Process FMEAs. We also have provision for additive manufacturing (3-D printing) and our in-house captive Tool Room manufactures the tools, moulds, jigs and fixtures as per the design team. Our R&D centre also houses a LAB for validation and testing of our products.



R&D Process



New Business Development

Gilard's team conducts market research and identifies market needs for a specific product which can be taken up for development.



Product Design

Gilard's OSM™ - NPD software solution is used to design new products by our certified design engineers. The team works on customer's input which can be a finished drawing, a sample, a 3D model or just a concept. State of the art design softwares like Solidworks, PTC Creo, are used for Solid Modelling as well as Prototype Sampling.



Tool Design

We design the moulds, press tools, jigs and fixtures as well as checking aids. We mostly design progressive tools for our sheet metal parts and multi cavity moulds for our plastic moulded parts. For our assembly processes, we design jigs, fixtures as well as Special Purpose Machines.



Tool Manufacturing

We have a captive tool room which is equipped with sophisticated machines like CNC Wire Cuts, EDMs, Machining Centres, Grinders, etc. We also have measuring equipment like CMM, Profile Projectors and Tool Maker's Microscope. The entire tool room is manned by highly skilled machinists, tool makers and inspectors.



Product Validation

Our design and development activity starts by capturing the 'Voice of the Customer' and then freezing the DVP (Design Validation Plan). All design activities like function study, QFD, DFMEA are based on the DVP. Once the development activities are completed, the pilot samples are subjected to testing as per the DVP in our in-house LAB as well as our approved LABs.

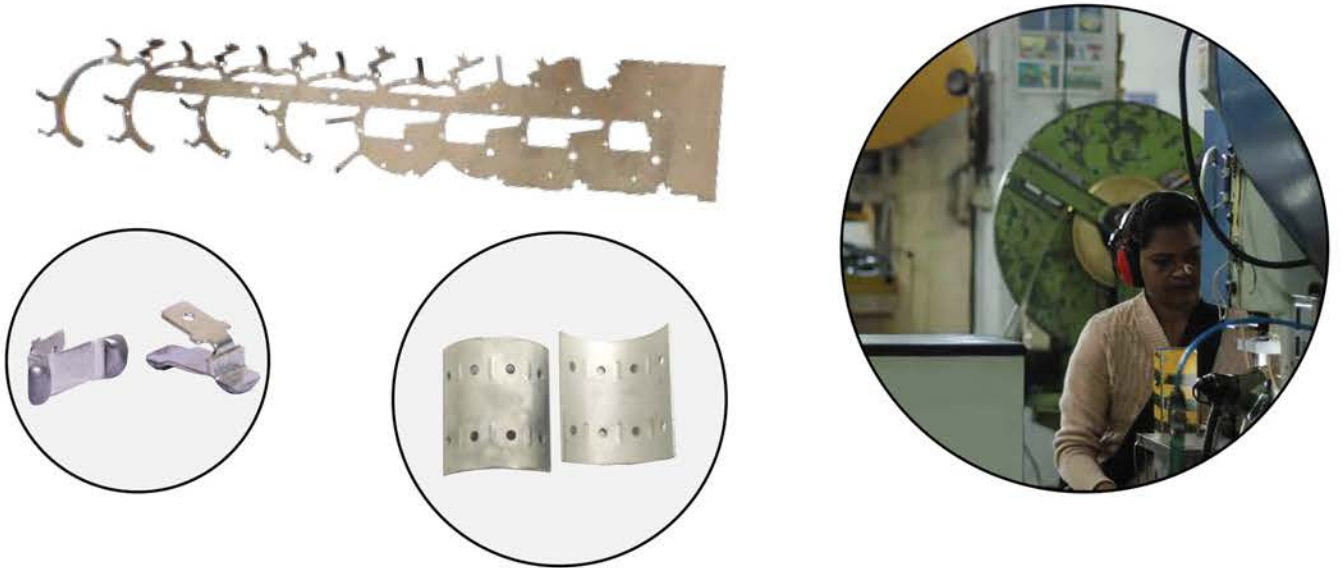
INJECTION MOULDING

Gilard has facilities for Injection Moulding of Thermoplastics as well as Thermosetting Material. Besides these, Gilard also does Compression, Rubber and Insert Mouldings. The machine capacities range from 30 to 250 tons. Different Injection engineering plastics like Nylons, Polyesters, Acetals, Polycarbonates, ABS, PP, PPO, PPS and elastomers are processed.

Gilard is equipped with fully automatic computer controlled machines including 15 Thermoplastic Horizontal Machines, 6 Vertical Injection Moulding Machines, 5 Horizontal Thermoset Injection Machines, 2 Compression Moulding Machines & a Vertical Thermoset Injection Machine.



Gilard uses high speed power presses (upto 600 spm) and medium speed presses with progressive tools for making stamped parts. The machine capacities range from 10 to 80 tonnes. Most of the presses are fitted with feeders and decoilers. Different materials like CRCA, GI, Copper, Phosphor Bronze, Beryllium Copper, Stainless Steel, etc are processed. We also do draw and forming operations in our stamping shop.

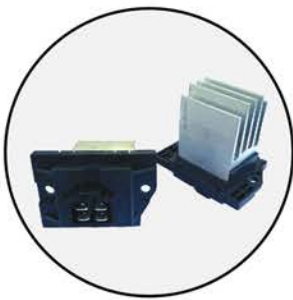


PLATING

Gilard has an in-house Plating Shop which has lines for Gold, Silver, Tin, Nickel, Copper and Zinc Platings. While most of the lines are semi automatic, the silver line is fully automatic. Gilard is an environment conscious company and takes care that all platings are ROHS compliant. Gilard also has an Effluent Treatment Plant in place to treat the effluent.

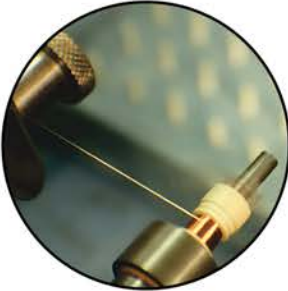


Gilard is an equal opportunity provider and that is obvious when one walks into the assembly shop which is run by a sea of women workforce. Gilard has flexible lines for different products and dedicated lines for specific customers enabling us to cater to requirements of both high volumes as well as high variants. The lines are scientifically designed to yield maximum productivity with zero defects using techniques of Line Balancing, Lean Management and Pokayoke. Single piece flow with on-line inspection and testing ensures high quality standards.



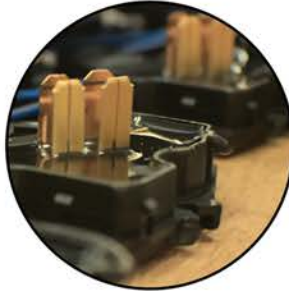
SPECIAL PROCESSES

Gilard is equipped with Special Purpose Machines to perform certain special processes required for customised product requirements for the customers. These include processes like Printing, Spot Welding, Dip Soldering, Hand Soldering, Winding, Heat Shrinking, Cementing, Potting, Wire Cutting and Paint Fill.



WINDING

Using high speed automatic machine capable of winding wire as fine as 0.06mm



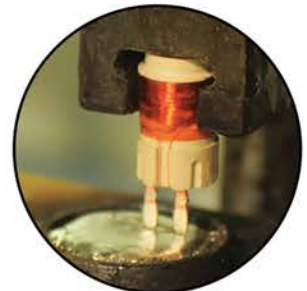
POTTING

Using 2 part epoxies & PU for sealing & waterproofing the assembly.



SPOT WELDING

3 Phase 25 KVA spot welding machines to spot weld two metals together using Tungsten / Copper electrodes



SOLDERING

Electronically controlled, temperature displayed soldering stations in place where ever required.



OUR VALUABLE CUSTOMER LIST

*The logos depicted above are registered trademark of companies for whom we are Tier 1 / Tier 2 supplier.

INDUSTRY 4.0

SMART Manufacturing Plant

A study conducted by UNIDO (United Nations Industrial Development Organisation) named Gilard as a manufacturing company with advanced levels of Industry 4.0 controls. Gilard also won ACMA's Gold award for "Excellence in Digitisation".

This is made possible by OSM (Operating System For Manufacturing) developed by Gilard Application Programmers LLP (Part of Gilard Group) which is a multiple modular, integrated software designed to digitise the business as well as manufacturing processes in an organisation thereby helping to streamline all processes as per best industrial practices like Lean Management, APQP, PPAP, MSA, FMEA, SPC, TPM and TQM.



Business
Development &
Sales (CRM, CLM)



New Product
Development



Human Resource
Development &
Payroll



Document
Control



Financial
Accounting &
Asset Management



Manufacturing &
Product Life
Management



Purchase & Inventory
Management



Quality Control



Total Productive
Maintenance



Dashboard
(Management
Information System)



We do the same, just a lot better.

Better Production Planning Control ...
... to ensure on-time deliveries.
Better Material Planning Control ...
... to ensure No Production Hold-ups.
Better Process Control ...
... to ensure better and consistent Quality.
Better Cost Control ...
... to ensure a better price / value.

This OSM software has been developed and customized over a period of 37 years and controls every process at Gilard including monitoring production in real time.

Gilard CSR



Gilard's management strongly believes in Social Responsibility and have been actively engaged since 2011, even when Gilard was not legally mandated by law to do so. At Gilard, we believe that the main purpose of any organisation is to be a positive contributor to the society. Gilard has a dedicated in-house CSR team named 'EHSAS' which stands for Environment, Health, Safety & Society, which has been active since 2011 and works towards sensitisation of the immediate society on various social issues. Gilard's Team EHSAS works with various NGOs and supports and donates for different causes actively for the betterment of the society. Gilard works for the following causes:

Empowering people with disabilities by providing support and assistance for employment opportunities.

Donating to NGO that work diligently to promote the rich heritage of Indian Classical Arts.

Working with NGOs dedicated to the development of children with or at risk of Developmental Delays / Learning Disabilities / Mental Retardation.

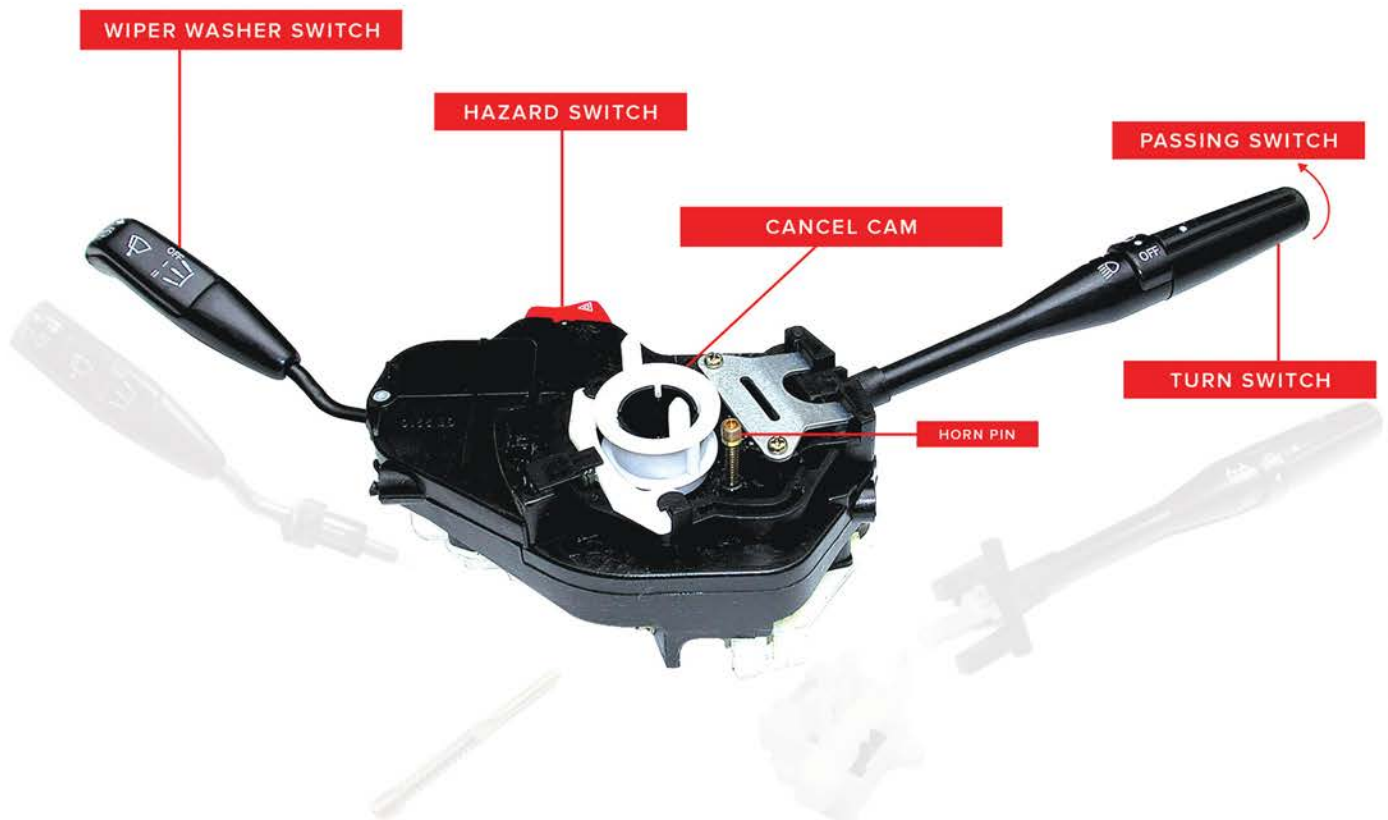
Assisting NGOs that spread awareness on breast cancer and cervical cancer by organizing free mammography and pap smears and support poor patients in need of treatment.

Supporting an NGO that aims at social upliftment and empowerment of poor girl children who are either orphans or abandoned by their families, through holistic education.



"In the end, it is never just about running a business, sales growth or profitability. The true measure of a company is not just what it does for shareholders and clients, but how well it addresses the needs of its employees and the immediate society."

H.S. Sethi
(Chairman)



SPECIAL FEATURES:

- Rating 12V DC
- Coupler Mounting
- Imbedded Contacts (not PCB) for long Life

CONSISTS OF :

- Wiper Switch (dual speed) + Flash
- Washer Switch
- Hazard Switch
- Indicator Switch
- Horn Switch
- Head Lamp On-Off
- Dipper Switch

GE 2210

RESISTORS



GE 2341

4 SPEED RESISTOR WITH TCO
(Scorpio)



GE 2341-01

PLATE TYPE RESISTOR
(X1, FCA, Y1, TML)



GE 2371

FET



GE 2321

4 SPEED RESISTOR
(Indica & Scorpio)



GE 2302

3 SPEED RESISTOR BLOWER WITH THERMAL FUSE (Tata Nano)



GE 2331-05

4 SPEED RESISTOR
(Maruti Estilo)



GE 2162-03I

4 SPEED RESISTOR BLOWER
(Tata Indica, Maruti Versa, Sumo Face Lift Reva Electric Car)



GE 2214

RADIATOR RESISTOR
(Mahindra S101 & Tata)



GE 2351

RADIATOR RESISTOR
(Mahindra TUV)



GE 2214-07N

RADIATOR RESISTOR
(Tata Nexon)



GE 2214-09

RADIATOR RESISTOR
(Tata Curvv)



GE 2214-05M

RADIATOR RESISTOR
(Tata Nexon)

COMPONENTS STARTERS, ALTERNATORS & MOTORS



GE 2506

FIELD MOULDING
(ACE Start Stop - Tata)



GE 2507-01

FIELD MOULDING
(Tata Cummins Ltd.)



GE 2517-02

FIELD MOULDING
(Maruti Wagon-R)



GE 2514

REGULATOR MOULDING
(Maruti)



GE 2519-02

REGULATOR MOULDING
(VECV Truck)



GE 2519 RMS

REGULATOR MOULDING
(Tata Narrow Cab & Sumo Gold)



GE 2518-03

FIELD MOULDING
(Tata Narrow Cab VECV Truck)



GE 2510

BRUSH BOX MOULDING



GE 2521

STAY PLATE RADIATOR MOTOR

SWITCHES FOR LCV



GE 2204

MANUAL BATTERY CUT OFF SWITCH
 Rating : 12 / 24V, 100 / 250 Amps
 Operation : Rotating 90° to disconnect and connect



GE 2197

RELAY SUB ASSY (Relay based BCOS)
 Rating : 12V / 24V, Max 300Amp
 Available in SPST and DPST versions



GE 781-01

NEUTRAL SAFETY SWITCH (NC TYPE)
 Rating : 24V DC, 0.5 Amp
 Operation : Push to Off



GE 751

SWITCH STOP LAMP
 Rating : 12V DC, 8 Amp
 Operation : Push to Off



GE 752

SWITCH ACCELERATOR
 Rating : 10V DC, 3 Amp
 Operation : Push to On



GE 768

SWITCH EXHAUST BRAKE
 Rating : 12V DC, 3 Amp
 Operation : Rocker Type



GE 769-RL

SWITCH ROOF LAMP
 Rating : 12V DC, 5 Amp
 Operation : Push to On / Push to Off



GE 769

SWITCH ROOM WARMER
 Rating : 12V DC, 0.5 Amp
 Operation : Push to On / Push to Off



GE 768-FL

SWITCH FOG LAMP
 Rating : 12V DC, 10 Amp
 Operation : Rocker Type



GE 769-03

DIFF SWITCH
 Rating : 12V DC, 0.5 Amp
 Operation : Push to On / Push to Off



GE 750-02

DOOR SWITCH
 Rating : 12V DC, 2 Amp
 Operation : Slide to On



GE 780-01

CNG SWITCH
 Rating : 12V DC
 Operation : Push to On

SWITCHES FOR TRACTORS



GE 765-03

START SWITCH

Rating : 12V DC, 30Amp
Operation : Rocker Type
Termination : Lug Type



GE 764

LIGHT SWITCH

Rating : 12V DC, 10 Amp
Operation : Rotary
Termination : Screw Type



GE 786

START SWITCH

Rating : 12V DC, 15Amp



GE 762-06

BRAKE LIGHT SWITCH 60 HP MODEL

Rating : 12V DC, 10 Amp
Operation : Push to off



GE 762

BRAKE LIGHT SWITCH

Rating : 12V DC, 10 Amp
Termination : Clip on



GE 761-04

HAZARD SWITCH (TOGGLE TYPE)

Rating : 12V DC, 11 Amp
Operation : Toggle
Salient Features : One input / Two outputs



GE 763

HORN PUSH BUTTON

Termination : Clip on & Screw Type
Salient Features : Protective rubber cap provided



GE 773A

NEUTRAL SWITCH

Rating : 16V DC, 5 Amp
Termination : Wire Insertion Type



GE 726-7413P

INDICATOR SWITCH

Rating : 12V DC, 10 Amp
Operation : Toggle
Termination : Wire Insertion Type

BLOWER SWITCH SERIES



GE 2219-SU

3 SPEED BLOWER SWITCH (12/24V)



GE 2219-SV

3 SPEED BLOWER SWITCH (12/24V)
WITH PLATE



GE 2218-02

CONTROL PANEL ASSEMBLY



GE 787

SLIDER SWITCH 4 POSITION 3 SPEED



GE 778

3 & 4 SPEED BLOWER SWITCH
(12/24V)



GE 778-04

3 SPEED BLOWER SWITCH (12/24V)
WITH PLATE



GE 2219-SV02

3 SPEED BLOWER SWITCH (12/24V)
WITH BIG PLATE



GE 2219-M04

4 SPEED BLOWER SWITCH
WITH PLATE (VECV)



GE 778-06

3 SPEED BLOWER SWITCH (12/24V)

WIRE ASSEMBLIES



GE 1172

OVERMOLDED ASSEMBLY



GE 919

CONNECTOR CABLE FOR DIESEL
FUEL PUMPS



GE 913

FUEL INJECTOR CONNECTOR WITH
GOLD PLATED TERMINALS



GE 2185-05

WIPER COVER ASSEMBLY



GE 2406

INNOVA BAKELITE TERMINAL



GE 755-01

SWITCH ASSY CONTROL
(Maruti 800)



GE 755-03

SWITCH ASSY CONTROL
(Maruti Esteem)



GE 755-06

SWITCH ASSY CONTROL
(ZEN)

TERMINAL BLOCKS



GE 1265 - 01

4 WAY TERMINAL SEAT (SMALL)
Rating : 300V AC 25A



GE 1265-02

3 WAY TERMINAL SEAT
Rating : 300V AC 25A



GE 1266

4 WAY TERMINAL SEAT (BIG)
Rating : 300V AC 25A



GE 1267

3 WAY TERMINAL SEAT (SMALL)
Rating : 300V AC 25A



GE 1268

5 WAY TERMINAL BOARD
Rating : 300V AC 25A



GE 1269

4 WAY TERMINAL STRIP
Rating : 600V AC 60A



GE 1270

4 WAY TERMINAL STRIP
Rating : 600V AC 35A



GE 1271

3 WAY TERMINAL STRIP
Rating : 600V AC 25A



- Mounting pitch - 46mm.
- Coupler arrangement with flexible wire.
- Bright zinc plating to prevent corrosion.



- Mounting pitch - 85 x 85.11 mm holes.
- Body made of pressure die casted Aluminium.
- Connection through copper stranded PVC wire.



UNIT CONTROL
Rating: 12V DC Normal Temperature Characteristics
of Timer



POPULATED PCB OF UNIT CONTROL

COLD START SET UP FOR DIESEL VEHICLES



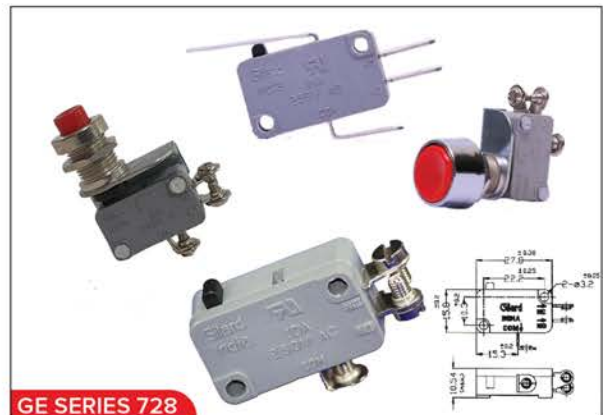
Unit Control (GE 1563) senses the temperature using a sensor and the internal circuit decides the time duration of the heating to be provided to the engine. Triple timers energise the Heater Relay (GE 1561) which in turn power the Air Heater (GE 2205) for the required duration to start the engine.

MICRO SWITCHES



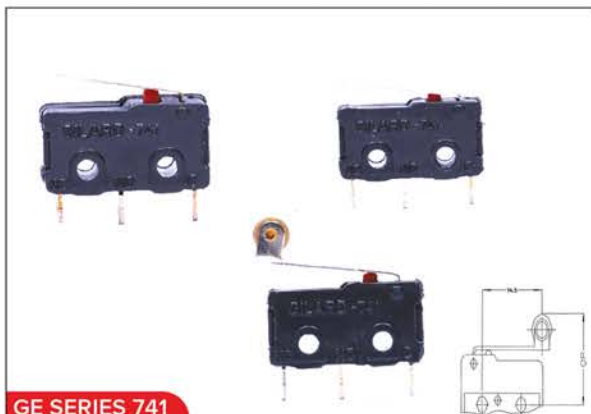
GE SERIES 712

Contact Rating : 230V AC, 2 Amp
Contact Resistance : 30m ohm (max) for Gold Plating
20m ohm (max) for Silver Plating



GE SERIES 728

Contact Rating : 230V AC, 10 Amp
Contact Resistance : 10m ohm (max)



GE SERIES 741

Contact Rating : 230V AC, 3 Amp
Contact Resistance : 10m ohm (max)



GE SERIES 742

Contact Rating : 230V AC, 15Amp
Contact Resistance : 10m ohm (max)



GE SERIES 774

Electrical Specifications:
Operating Force : ≤ 300 N
Endurance / Life test : 5,000,000 Cycles
Operating Voltage : 6-15 Volts
Dielectric Strength : ≥ 500 Volts



GE SERIES 782

Electrical Specifications:
Operating Force : 1.96 N or less
Endurance / Life test : 50,000 Cycles
Operating Voltage : 12V DC, 1 Amp
Insulation Resistance : 1M ohm at 500V DC

TOGGLE / ROCKER SWITCHES



GE SERIES 713

M12 BUSHING

Rating : 230V AC, 4.5 Amp
Contact Resistance : 20m ohm (max)
Insulation Resistance : 100M ohm (min)



GE SERIES 726-1

M12 BUSHING

Rating : 230V AC, 6 Amp
Contact Resistance : 10m ohm (max)
Insulation Resistance : 1000M ohm (min)



GE SERIES 726-2

M12 BUSHING

Rating : 230V AC, 10 Amp
Contact Resistance : 10m ohm (max)
Insulation Resistance : 1000M ohm (min)



GE SERIES 726-3

M12 BUSHING

Rating : 230V AC, 15 Amp
Contact Resistance : 10m ohm (max)
Insulation Resistance : 1000M ohm(min)



GE SERIES 726-4

M12 BUSHING

Rating : 230V AC, 20 Amp
Contact Resistance : 10m ohm (max)
Insulation Resistance : 1000M ohm (min)



GE SERIES 727

M6 BUSHING

Rating : 230V AC, 3 Amp
Contact Resistance : 10m ohm (max)
Insulation Resistance : 1000M ohm (min)



GE 714-321B / 322B

**DPST WITH BLACK KNOB /
DPDT WITH BLACK KNOB**

Current Rating : 16 Amp
Operating Voltage : 250 V AC



GE 714-321R / 322R

**DPST WITH RED KNOB /
DPDT WITH RED KNOB**

Current Rating : 16 Amp
Operating Voltage : 250 V AC



GE 714-321Y / 322Y

**DPST WITH YELLOW KNOB /
DPDT WITH YELLOW KNOB**

Current Rating : 16 Amp
Operating Voltage : 250 V AC



GE 714-321G / 322G

**DPST WITH GREEN KNOB /
DPDT WITH GREEN KNOB**

Current Rating : 16 Amp
Operating Voltage : 250 V AC



GE 714-321AI

**DPST WITH ILLUMINATED
AMBER KNOB**

Current Rating : 16 Amp
Operating Voltage : 250 V AC



GE 714-321RI

**DPST WITH ILLUMINATED
RED KNOB**

Current Rating : 16 Amp
Operating Voltage : 250 V AC

SHEET METALS / MOULDINGS



GE 2216

INTER LEAF



GE 1397

DEFOGGER TERMINAL
Nexon (Tata)



GE 2148 / 2148-02

CANSHIELD BASE /
CANSHIELD COVER



GE 1385

DEFOGGER TERMINAL



GE 2520

TERMINAL CONDENSER



GE 2515

TERMINAL BLOCK



GE 2504

NUT PLATE



GE 2505

HOLDER DOOR GLASS



GE 2503

PLATE

DEALER NETWORK



Gilard Electronics Pvt.Ltd.

C-132, Phase VIII, Industrial Area, SAS Nagar,
Mohali (Punjab) - 160071

Corporate Identity No.(CIN) U31909PB1983PTC012861

E-mail : marketing@gilard.com, sales@gilard.com

Phone : (0172-5090773, 5020517)

Direct Sales : 0172-5020511-514-517